

N-Line Monitors

Control options

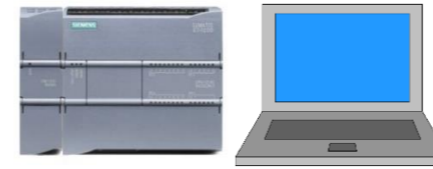
3rd party control

Remarks

NCOM protocol RS485 (CAT5, Max. 100mtr)



NControl



PLC or PC (with USB-RS485 adapter cable: 0901651)

Function control
Dimming

PLC/PC

RS485

RS485

NControl

Command/presets

Knob/presets

NCOM Remote Module



LIN-bus (*1)
(CAT5, Max. 10mtr)



Ext. encoder: 0901600t-a
Ext. potentiometer: 0901600t-b

Local dimming
Central dimming
Local OSD control
Local ON/OFF control
Central ON/OFF control
(On 1st unit in Zero-config only)

Encoder

Yes

Yes

Yes

Yes

Yes

Potmeter

Yes

Yes

No

Yes

Yes

N-Line K(G)E version



On-front dimming knob

Local dimming
Central dimming
Local OSD control
Local ON/OFF control
Central ON/OFF control
(On 1st unit in Zero-config only)

Encoder

Yes

Yes

Yes

Yes

Yes

Potmeter

Yes

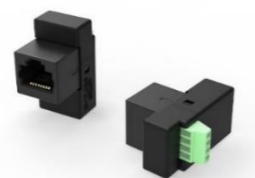
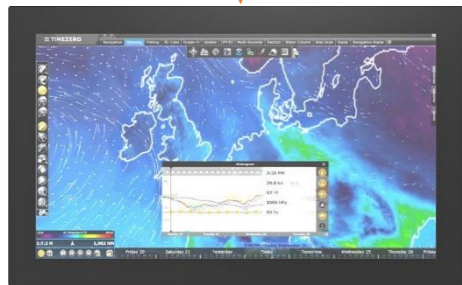
Yes

No

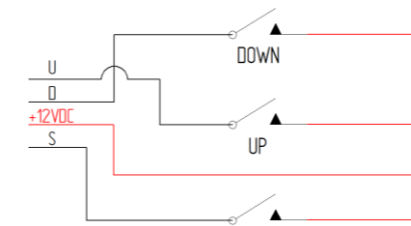
Yes

Yes

N-Line K(G)



Ext. 3-button control: 0901600t-c



External momentary switches

Dimming
OSD function control
ON/OFF Control

Local

Yes

Yes

Yes

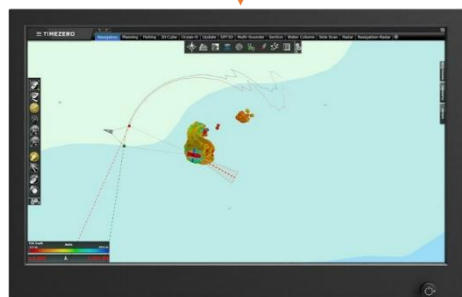
Central

Yes

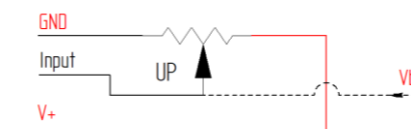
No

No

N-Line D(E)



Analog dimming control: 0901600r



External voltage control
V+ accepts 0-5/0-10VDC(jumper selectable)

Dimming Analog input
Dimming Potentiometer
OSD function control
ON/OFF Control

Local

Yes

Yes

No

No

Central

Yes

Yes

No

No

*1) LIN-bus modules can be combined, but it is not possible to have 2 identical modules on one unit. Fi. 2 potentiometers is not supported, but 1 potentiometer and 1 encoder is okay